



Past President's Report *by George Voltz*

By now I believe most members have heard that I retired as PLIA president back in January. I have served, on and off, as president for 12 of the past 20 years. I decided it was time to pass the role and responsibilities of this office on to someone else. I have remained active in the PLIA since then, consulting on various issues and aiding in the transition of my responsibilities. I really enjoyed my time as president and especially want to thank all of the fantastic volunteers that I had the privilege to work with!

The best way to describe this past winter on the lake is mild; we experienced some of the mildest temperatures and minimal snowfalls that we have seen in years. Now, as the weather begins to get warmer and daylight is lasting longer, we know spring is right around the corner. This time of year our thoughts naturally turn to yard work, preparing our boats for launching, and attending the PLIA Annual Meeting. This is an early reminder to put 8:30am, June 10th, 2006 on your calendar to attend this year's Annual Meeting at the Nottingham School cafeteria.

At last year's Annual Meeting we tried a new panel style/question and answer format. This format was so successful that we decided to use it again this year. **Please bring your questions and concerns** about water quality, safety, environmental issues, dams, or anything lake related for our panel of guests to address.



After steady growth in PLIA membership in 2004, membership growth leveled off in 2005. Even with an overall increase in total membership and an increase in services provided, the PLIA has experienced an overall decrease in volunteers. This is the result of many long standing volunteers needing a break and not enough new volunteers signing up to take their places. **The PLIA needs some new faces to get involved and help preserve the quality of life that we all enjoy here on Pawtuckaway Lake.**

If you are interested in volunteering or would like to learn more about what opportunities are available, check out the Volunteer Form included with this edition of PawPrints. The Volunteer Form lists the primary areas that are in need of volunteers at this moment. If you would like to volunteer, just fill out the form and return it in the enclosed envelope with your annual dues. Or, attend the Annual Meeting and seek out a current volunteer to find out what's involved. It's a great way to meet your neighbors, help protect and preserve our lake, and have some fun!

One last note: Did you notice a drastic reduction in algae blooms on the lake this past summer? And, more significantly, did you know that there were no reports of any blue-green algae blooms last summer? **Has the mystery of the algae blooms been solved?** Come to the PLIA Annual Meeting on June 10th to find out what the panel of experts have discovered.



Inside this issue

Town of Nottingham & PLIA	2
Town Applies for Grant \$\$\$	3
Your Turn	4
ANNUAL MEETING	4
Lake Host Program	5
PLIA Website	5
Lake Host Point Person	6
Sunfish sailing	6
Membership	7
Pawtuckaway Wildlife	8
Ice Golf	8

About the PLIA

The Pawtuckaway Lake Improvement Association is a private, non-profit organization formed to monitor and act upon environmental and safety issues in the Pawtuckaway Lake watershed area and other issues of concern to its members. The Association routinely conducts water sampling under the New Hampshire Volunteer Lake Assessment program of the State of New Hampshire Department of Environmental Services. Other activities (sailboat races, fishing derbies, etc.) may be coordinated by the Association, but are funded by program participants.



reMARKable Home Repairs & Renovation LLC

FINISH CARPENTRY, DRYWALL, CERAMIC TILING, WALLPAPERING,
STAINING, Etc. LET'S TALK
Insured PAWTUCKAWAY LAKE REFERENCES AVAILABLE
Ask for Mark Harding (603) 942-7565



Yankee Cabinet Company Simple Solutions

Raymond Shopping Center
15 Freetown Road Unit #8
Raymond NH 03077

Phone 603-895-5597
Fax 603-895-1441
Cell 603-234-1498

Mark E. Colby
Kitchen Designer

Barnes Distribution BARNES GROUP INC KAR PRODUCTS

George Voltz
Area Manager

603-303-6854
email:george.voltz@bd-bgi.com

Industry Leader in the Distribution of
Maintenance, Repair, Operating and
Production (MROP) Supplies

New Programs Benefit Pawtuckaway!

HISTORIC EVENT

Town of Nottingham & PLIA Team Up

by Tom Duffy

In 2005, a new cooperation occurred between the Town of Nottingham and the PLIA. Together, we agreed to fund a study to investigate one aspect of Pawtuckaway water quality. Selectman Mary Bonser received a grant from the New England Grassroots Environmental Fund to finance a study "An investigation of zooplankton size, structure, and phytoplankton communities in Pawtuckaway Lake" during the summer 2005.

The Town Selectmen contributed 50% and the PLIA 25%. The study was contracted with UNH Professor James Haney, Chair of the Zoology Department and Director of the UNH Center for Freshwater Biology. The overall objective was to evaluate the water quality conditions in the lake and the potential impacts of the alewives on the water quality in the lake. Alewives are bait or feed fish stocked in the lake each year for the last several years by NH Fish & Game. Specific goals of the study included:

1. Determine the composition and size distribution of the zooplankton
2. Determine the phytoplankton composition
3. Estimate the grazing pressure of the zooplankton on the phytoplankton community
4. Estimate the intensity of fish planktivory from the zooplankton analysis
5. Measure water quality parameters throughout the summer
6. Determine the concentration of the cyanotoxin microcystin (a blue-green algae) throughout the summer and correlate with the changes in plankton
7. Compare the conditions in Pawtuckaway lake with historical data on alewife and non-alewife lakes to assess the integrity of its plankton communities
8. By sampling all of the above at three distinct locations within the lake, identify potential problem areas in the lake

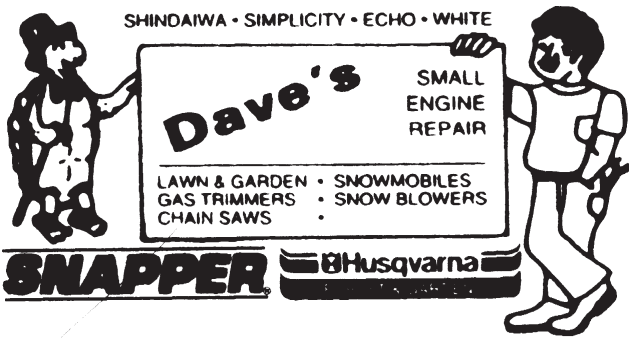


The three sampling sites included the two VLAP deep-water sampling sites and a site just north of the Twin Islands. The data gathered is still being analyzed. But, more important than the study itself, is the fact that all three Selectmen (Bonser, Netishen, and Bock) were highly supportive of this study. **This has begun a new era in our history where the Town of Nottingham recognizes Pawtuckaway as a valuable asset to the Town, a treasure that needs to be carefully protected to maintain property values and environmental integrity of the lake's watershed.** (See related article on GRANT \$\$\$)

Emergency Numbers

Fire / Police / Rescue
911
Nottingham Fire (Office)
(603) 879-5666
Nottingham Police (Office)
(603) 679-1506
NH State Police (Office)
(800) 525-5555
NH Marine Patrol
(603) 293-2037
DES (Environmental Services)
(603) 271-3503
New Hampshire Fish & Game
(603) 271-3211
Pawtuckaway State Park Office
(603) 895-3031

SHINDAIWA • SIMPLICITY • ECHO • WHITE



Dave's
SMALL
ENGINE
REPAIR

LAWN & GARDEN • SNOWMOBILES
GAS TRIMMERS • SNOW BLOWERS
CHAIN SAWS •

SNAPPER **Husqvarna**

BUSINESS RT. 101, RAYMOND, N.H. 03077 TEL. 603-895-2735




**MOUNTAIN ROAD
TRADING POST**
CANOES & KAYAKS SALES & RENTALS

Old Town *Yacht Club* *Escape*
TRAILERS / Sailboats

Radisson


Penny & George Beaumont 68 Mtn. Rd., PO Box 57
(603) 895-3501 Raymond, NH 03077-0057
Web: mrtp.net NEAR PAWTUCKAWAY
Email: mrtp01@mediaone.net STATE PARK

Thomas Duffy
tduffy@pruverani.com



Prudential

Verani Realty
One Verani Way
Londonderry, NH 03053
Phone: 603-434-2377 ext/ 2101
Fax: 603-434-6189
Direct Line: 603-845-2101 www.pruverani.com



An independently owned and operated member of The Prudential Real Estate Affiliates, Inc.

TOWN APPLIES FOR GRANT \$\$\$

For Pawtuckaway Lake Watershed!

by Tom Duffy

A \$30,000 grant is pending that will benefit the Pawtuckaway watershed through the efforts of the Pawtuckaway Lake Advisory Committee (PLAC). This recently formed Selectman's committee meets once a month (on Thursdays at 7:30 PM at Town Hall). You are invited to attend, as it is posted as an open meeting. The grant is a Watershed Assistance and Restoration Grant, available through the NH Dept. of Environmental Services (DES). On April 20th, about 20 Pawtuckaway residents met with the DES leaders to discuss goals and outcomes of the study. A second meeting is scheduled for Thursday, May 18 at 7:30 PM and all are encouraged to attend.

The goal of the work is to reduce excessive phosphorous loading through tributaries and **direct runoff from individual properties**. Phosphorous is a nutrient that feeds algae and plant life. It is found in soaps, fertilizers, and decaying matter like leaves. Storm water runoff from surrounding properties, including off lake properties, washes this nutrient into the lake. A watershed based plan will be developed, best management practices (Bump's) will be designed and implemented, and a property owner's guide will be created to educate the home owners on prevention techniques. Two or three sites will be selected as demonstration models to show how native vegetation buffer plantings, stream bank stabilization, vegetated swales along lake roads, and storm water detention/infiltration areas can stop this runoff problem.

The outcome will create better management of our landscape and education of the watershed residents. If we knew what to do for better water quality, we all might try to do it! Ultimately, this shall reduce algal blooms and eliminate dangerous cyan bacteria to meet state water quality standards.

The money will be used for the following goals:

1. Develop a Waterfront and Watershed Property Owner's Guide for residents and developers.
2. Up to three properties will be selected to model these landscape techniques and demonstrate Best Management Practices.
3. Signage will be placed within the watershed posting the watershed boundary.
4. Before and after digital photos will be taken of all landscape and road projects.
5. PLAC will present their findings at the DES Watershed conference upon completion of the projects.

Therese Thompson of the PLIA and Mary Bonser have been the driving forces behind these projects. Mary Bonser is the Selectman Representative on PLAC which also currently includes: Tom Duffy, Jack Caldon, Peter Gylfpe (Planning Board member), Dave Fernald, Jeff Boucher (State Park), Judy Doughty, and Bob Mooney as the other committee members.

A copy of the final grant document will be available at www.pawtuckawaylake.com.

For advertising
rates & information
please call
Bob Gifford
895-4768

Johnson
OUTBOARDS

ski-doo

Bickford's Sport Center

- Ski-doo Snowmobiles • Bombardier ATV's
- Johnson Outboards
- Crestliner Aluminum & Pontoon Boats
- Shoremaster Docking & Boat Lifts
- Storage - Boats and Snowmobiles

"Champions In Service"

1664 Dover Rd. (Rt. 4), Epsom, NH 03234
(603) 736-9050



RE/MAX® Advantage

David & Jennifer Turcotte, Owners

64 Freetown Road
Raymond, NH 03077

Office (603) 895-4500

Cell (603) 303-7044 David

Cell (603) 303-3666 Jennifer

www.RockinghamNHhomes.com

Buyer and Seller Representation

Each Office Independently Owned and Operated

THERE ARE TWO SIDES TO EVERY BOARD
WE KNOW THEM BOTH



FERNALD LUMBER, INC.

SOFTWOOD - WHOLESALE & RETAIL

JIM AND LINDA FERNALD
MILL (603) 679-2997
1-800-287-8998
e-mail: flinc@rcn.com

240 Route 152
P.O. Box 450
Nottingham, NH
03290-0450

While every effort has been made to ensure
the accuracy of the information contained
in this publication, we apologize for any
errors that do occur.

YOUR TURN

To Be a PLIA Officer

The PLIA has an **URGENT** need for a new President and Secretary. George and Carol Voltz have served as President/Secretary for many years. We need new leadership to step forward so that this association can continue to move forward.

In the past few months, we have been guiding the PLIA as an Executive Committee. However, the PLIA works best with one person directing our affairs and delegating responsibility.

What does it take? It takes a couple hours a month from July to December, and a couple hours per week from December to June to get ready for the Annual Meeting and the related summer activities.

You will have help! We have an annual pattern of activity and a few volunteers to help. With a few more dedicated volunteers taking responsibility for a specific activity, the President can easily hold the 'big picture' in mind and execute the annual plan.

If you want to explore more about this, please call George Voltz or Tom Duffy to discuss. If you have some time to volunteer, please tell us. There are a few small jobs that need attention on a regular basis.

ANNUAL MEETING

Date: June 10, 2006

Time: 9am-12 noon

Place: Nottingham School

Everyone is welcome!

We will have a chance to learn more about living on the lake, and recent PLIA activities.

The **Women's Club of Nottingham** is providing refreshments to benefit their scholarship fund (great pastries for breakfast—be generous!) There will be information on water testing, fishing, wildlife, sailboat races, the Lake Host Program, our new website, and several new projects and grants we have received.

Using last year's popular format, we will have an opportunity to discuss our concerns with the Town Panel including Fire, Police, and Marine Patrol. Another Panel including State environmental people will discuss the larger issues of water quality and the new grant (see Grant\$\$\$ article). The meeting will end with a raffle where many prizes will be won. **You might be the winner of a new KAYAK!**

JOIN THE PLIA EMAIL NOTIFICATION LIST

This list is for PLIA use **ONLY** and will not be given out to **anyone**. We send out notices regarding upcoming monthly meetings, special meetings, upcoming events, Town issues, etc. **YOU MUST BE A PAID MEMBER**. Send your email address to cvoltz@pawtuckaway.com and we will add your name to the email; and if you already are on the email notice list and have changed your email address please send the corrected address to cvoltz@pawtuckaway.com.

Liar's Paradise

Convenience Store

Route 152 • Nottingham, NH



HAVE YOU BEEN TO PARADISE???

ATM Available Inside

All Major Credit Card Accepted



Nottingham Pizzeria
679-3331



Tom's Garage
679-3376

MacCallum's BOATHOUSE INC.



Peter MacCallum
PRESIDENT

1049 Dover Road • P.O. Box 744
Epsom, NH 03234
Tel: 603-736-4750 Ext. 12
Fax: 603-736-9505
E-mail: info@maccallumsboathouse.com
Website: www.maccallumsboathouse.com



Peg Case, LTG, CBR
Broker / Owner

P.O. Box 967
Raymond, NH 03077

(603) 895-2718

Web: www.casescove.com
E-mail: CASESCOVE@prodigy.net



Case's Cove Realty
on Pawtuckaway Lake

2006 LAKE HOST PROGRAM

The PLIA will be participating in the Lake Host Program again this year, and we are looking for both paid and volunteer Lake Hosts. On Pawtuckaway Lake we have two boat launches which we station Lake Hosts at during peak periods of traffic during the summer months. Lake Hosts are responsible for greeting every visitor in the process of launching a motorized vessel or removing one from the water; educating that person about what he/she can do to prevent the spread of milfoil and other invasive plant species; completing a brief Boater Survey; and conducting a courtesy boat and trailer inspection (if invited to do so by the boat owner), always removing any vegetation found and disposing of it in the prescribed manner. For more information on this position please contact George Voltz at gvoltz@pawtuckawaylake.com.

NEW PLIA WEBSITE

by Marc Dole

Growing up spending summers on Pawtuckaway Lake has been a wonderful thing. That's why I was so happy when we were able to move our family here year round in 2001. We moved into the house my Grandparents, Earle and Shirley Glidden, built in the 1950's. We did enlarge parts of the house to fit our four girls but it's still on the same foundation my grandparents laid down by hand.

I have always tried to help promote things I believe in, and that is why I offered to redesign and host the PLIA website last year. I run a company called Hatchling Studios in Portsmouth, and we do Animation and web development for clients like Reebok, Liberty Mutual, The Music Hall and many others. Having all this talent at my fingertips, I like giving back where we can. Last year we donated over 1000 hours of our time to non-profits including redesigning The State's Film Association website www.filmnh.org (I am one of 4 state film commissioners) and of course the PLIA website.

The mission of The Pawtuckaway Lake Improvement Association (PLIA) is to monitor and act upon environmental and safety issues in the Pawtuckaway Lake Watershed area and other issues of concern to its members.

I believe that the site needs to stay on top of the environmental issues but it is also a community site where we can share information about living and spending time on the lake. The site was built to allow members to post information in a true community fashion, and this means the site is very interactive but needs your input to grow. The site is live, and we are looking for content from our members. Our design can be found at www.pawtuckawaylake.com.

I have a webcam on my dock and I plan to add that to the site this summer once I update the quality of the picture. This will be a fun addition to the site and great for all that want to be spending more time on the lake, either planning on what they will do when they get home that night or to the lake that weekend.

If you have ideas or want to start adding information or pictures to the site please contact: webmaster@pawtuckawaylake.com.

Roland's Sewer Service

Douglas Smith, Proprietor

15 Smoke St Nottingham, NH 03290

603-679-1862

P. O. Box One Salem, NH 03079

603-898-2351

Septic Tanks & Leach Fields Pumped
Baffle's Repaired
System Inspection
Outlet Filter Maintenance
Snow Plowing (Nottingham Area Only)



Sweatshirts ETC.



Screen Printing • Embroidery • Custom Designs & Transfers
Advertising & Promotional Items • Customized Gifts

Cozy Corners, Plaza 27 • Raymond, NH

(603) 895-0800

www.sweatshirtsetc.com



Sun. 9-3
Mon.-Fri. 7:30-6:00
Sat. 8-5

Radio Grove Hardware

radiogrove.doitbest.com

250 Rt. 27

Raymond, NH 03077

radiogrove@netscape.net

(800) 499-4943

(603) 895-2233

FAX (603) 895-0331



Strikers East Bowling Center

www.strikers-east.com

Stephen Hardy

General Manager

4 Essex Drive, Raymond, NH 03077

PH 603-895-9501 FX 603-895-1141

Exit 5 Rt. 101 behind mcdonalds

Leagues or Open Play
We're Strikers
Above The Rest



2006 LAKE HOST POINT PERSON POSITION

The PLIA has been accepted to participate in the 2006 Lake Host Program again. This Program is very important to the lake, since it involves watching for exotic plants coming into the lake from boaters. We must provide a **Point Person**, who is a volunteer serving as the local "administrator" of the program. **This is a key role!** The Point Person functions as the liaison between the local paid and volunteer Lake Hosts and the New Hampshire Lakes Association. As THE local point of contact for the program over the summer months, the Point Person is someone who is available all summer, can devote 3 or more hours per week to the program—creating weekly ramp coverage schedules, dropping in at the ramp to check on the Lake Hosts and volunteers several times per week, and attending to the administrative duties described below. The Point Person must attend one 3 hour training workshop in Concord, even if he/she has done so in past years (preferably as early in the season as possible). If you would be interested in this volunteer position for the summer, please contact George Voltz for more details. You can reach George at gvoltz@pawtuckawaylake.com or evenings at 603-895-9018.

LET THE SEASON BEGIN!

by John Decker

As I get older the years seem to pass much quicker. Maybe it was the lack of winter we had this year or maybe it's been all the time I've spent in the office these last few months. Anyway I am glad to see that May is right around the corner and with this another season of Sunfish sailing begins on Pawtuckaway Lake. We had a great season last year holding 60 races across the 22 week season. We had 12 sailors compete in at least one race with a maximum of 9 sailors for any particular race. It was great to see the increase in interest over the previous year.

This will be the third season since we switched to Tuesday evening sailing. This seems to be working great keeping everyone's weekends free. We will start our first week on Tuesday May 2nd with a start time of approximately 6:00 PM and continue each Tuesday through September. All are welcome to join us in this carefree, cost-free activity. If it's still a bit cold for you to start this early in the season, just join us when you can. We all had a great time last year; you can read about it at www.rutherfordssailing.com.

See you out there!

John Decker, Rutherford's Sailing Club
Pawtuckaway Lake, Nottingham, NH 03290 603-734-2024



MEMBERSHIP

by George & Carol Voltz

Over the years the PLIA have seen its membership numbers go up and down. Many associations do not survive a downward trend in membership but, fortunately, the PLIA has remained strong even with a smaller membership base. This strength is due to a solid and committed volunteer base. Through volunteer efforts membership is almost back up to record numbers.

From the year 1990 to 2000 membership in the PLIA dropped 30%, from a high of 80% to a low of 50%. In the period between 2000 and 2004 membership levels rose back to the 80% level. In the year 2005 there was a 5% drop in membership, putting us at our current 75% level. With all of the great programs and volunteer work being done, we are hoping to meet or exceed the 80% level this year. It doesn't cost a lot to support the PLIA. In fact, the \$10 membership fee hasn't changed for many years. 100% of the funds raised are put to use for the benefit of Pawtuckaway Lake and its lucky lakeside residents. **Please help us bring the remaining 25% of our friends and neighbors on board!**

Recently we were asked what the privacy policy of the PLIA is regarding membership information such as mailing addresses and email addresses. The PLIA does not sell or provide membership information to any other person or organization. This information is used solely for PLIA membership services. This has and will continue to be the policy of the PLIA.



Photo by John Caiati 6/05

We are always looking for additional volunteers to help implement new and existing services for our membership. The more help that we can get, the more benefits we can offer every member. **Volunteer positions are available for many different levels of commitment.** So, don't hold back from volunteering even if you only have a little bit of time to offer! If you are interested in volunteering or simply have questions about volunteering, you can contact me by one of the methods listed below. Or, feel free to attend one of our monthly meetings at the Nottingham Town Hall. Meetings are held the last Monday of every month at 7:00pm in Conference Room #1. We look forward to seeing you there!

We are always interested in your feedback, ideas, or potential services that the PLIA could provide to improve our membership's quality of life on the lake. You can send me your thoughts by email at gvoltz@pawtuckawaylake.com or mail them to: PLIA Membership Committee, PO Box 30, Raymond, NH 03077.

*There is a moment of hesitation
just before dawn
When light hangs still,
Laced with fading shadows,
Sheets of wind whine, veer and stall,
Gathering the scent of pine from a
night of slumber,
In this hush just before the angled
piercing of sunrise
Pawtuckaway begins her song.*

- Alison Hine

Photo by Claire Agresti

**Please invest in the future of Pawtuckaway Lake
by becoming a member today!**

The annual dues for PLIA are just \$10.00 per year.
Mail your check to: PLIA, PO Box 30, Raymond, NH 03077

Membership Application

Name _____

Mailing Address: _____

City _____ State _____ Zip _____

Lake Address: _____

Telephone _____ Email _____

Please check your preference for receiving Pawprints:

☐ Emailed PDF file (Choosing the emailed PDF copy
saves the PLIA significant printing and postage costs)

☐ Printed copy - US Mail

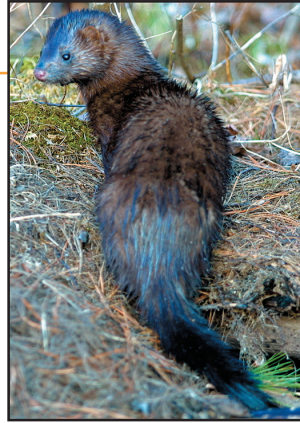
PAWTUCKAWAY WILDLIFE

HAVE YOU SEEN THE MINK?

by Jeff Gurrier

Kayaking at dusk in Neal's Cove I came upon a mink fishing along the waters edge. Just as I grabbed my camera the mink dove into the water and pulled a smallmouth bass up onto the shore. The mink's sharp claws quickly shredded the fish as he hurriedly ate his dinner. I was very lucky to witness this scene; mink are very reclusive and seldom spotted in the wild. They are plentiful, however, living in forested areas near rivers, streams, lakes and ponds in most U.S. states.

Mink are long and sleek, about 2' long and weighing between 1 ½ to 4 lbs. Males are typically 1 ½ times the size of females. They have small ears, short stubby legs, slightly webbed feet, and a tail that is about a third of their length. Their thick fur is brown to black in color with a layer of oily guard hairs that provide waterproofing. They have a patch of white fur under the chin and sometimes on the chest. They do not hibernate in the winter so they grow an additional layer of fur for added warmth. Baby mink leave their parents at 6 weeks old and live a solitary life averaging 3 years. Males and females will sometimes team up to raise their young but separate again once the babies are weaned.



Photos by Jeff Gurrier

Cunning predators, mink spend most of their time prowling within 100' of the water's edge, swimming and diving (up to 16' deep) looking for a meal. They are ferocious carnivores; their diet consists of muskrats, rabbits, mice, chipmunks, fish, snakes, frogs, birds, and crustaceans. Their bodies don't store heat well so they need a lot of food to survive. They are one of the few animals that will kill more than they need to eat, storing carcasses in their dens to eat later. Being nocturnal, they are active mainly from dusk to dawn.

Mink make dens from natural cavities around tree roots, in hollow logs, or in abandoned beaver and muskrat dens. They are nomadic, traveling extensively in an area as large as 5 square miles and rarely stay in the same den for long. There are two glands under the tail that spray (similar to a skunk) a musky smelling fluid they use to mark their territory or to discourage predators like owl, fox, coyotes, or dogs.

When running, a mink flexes its body, inchworm like, appearing to have a hunched back. Yet, they can travel at 7-8 mph on land and swim 1 ½ mph on the surface of the water. They frequently sit straight up and look around their territory for a meal. When content, a mink will purr like a cat.

14TH ANNUAL PAWTUCKAWAY OPEN CHARITY ICE GOLF AND CHILI COMPETITION

Another Huge Success

Eighty-one golfers tee'd off and 19 chefs competed for the coveted chili pot. Thanks to the efforts of Eric and Donna Danis, the organizers of the event, Course Pro's and hosts, **\$4,173** was raised for **Families in Transition** bringing the six-year total to **\$16,533**. Michelle Petersen, *Director of Development for Families in Transition* said "It was a tremendously enjoyable day. The weather was beautiful, the golfing was terrific, and the many pots of chili were unique and delicious. We continue to be so grateful to Eric and Donna Danis."

Congratulations to this year's winners:

Peggy Tucker, Women's Golf Trophy
Norm Lafond, Men's Golf Trophy
Wendee Robertson, Chili Champ

MARK YOUR CALENDAR

15th Annual
 Pawtuckaway Open Charity Ice Golf
 and Chili Competition
FEBRUARY 3, 2007

